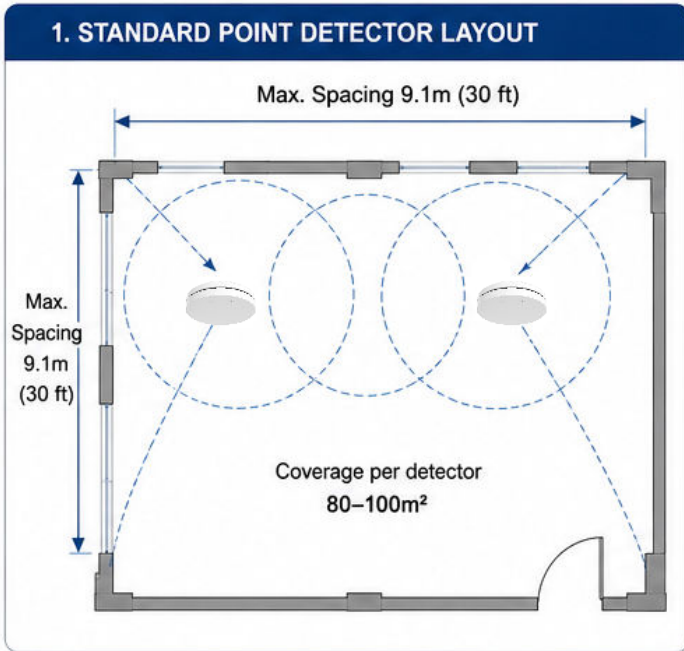


# SMOKE DETECTOR SPACING DIAGRAM

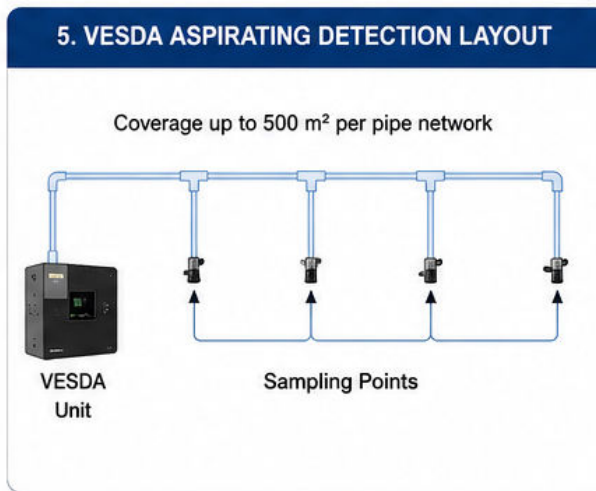
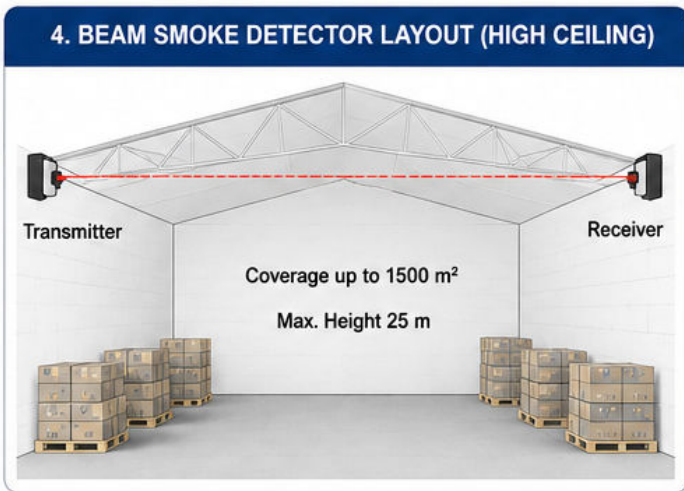


### 2. COVERAGE BY CEILING HEIGHT




Ceiling Height	Recommended Coverage per Detector	Max. Spacing (Ref.)
≤ 3.5 m	100 m <sup>2</sup>	9.1 m (30 ft)
3.5 – 6.0 m	80 m <sup>2</sup>	8.0 m (26 ft)
6.0 – 7.5 m	60 m <sup>2</sup>	7.0 m (23 ft)

**NOTE:**

- Higher ceilings require smaller coverage.
- Ceiling height is measured from finished floor to ceiling.



### 6. SPACING SUMMARY (REFERENCE)

Detector Type	Typical Coverage	Max. Spacing (Ref.)	Best Use
 Point Detector	80–100 m <sup>2</sup>	7.5–10 m (30 ft)	Offices, Hotels, Schools, Residential
 Beam Detector	Up to 1500 m <sup>2</sup>	Up to 100 m+	Warehouses, Gymnasiums, High Ceiling Areas
 VESDA (Aspirating)	Up to 500 m <sup>2</sup>	According to Design	Data Centers, Server Rooms, Critical Facilities

- ### GENERAL NOTES
- Install in accordance with NFPA 72, local codes, and manufacturer's instructions.
  - Avoid air vents, HVAC diffusers, and areas with excessive airflow.
  - Do not install within 1 m of fluorescent lights or 1.5 m of air supply diffusers.
  - Regular maintenance ensures reliable performance.

